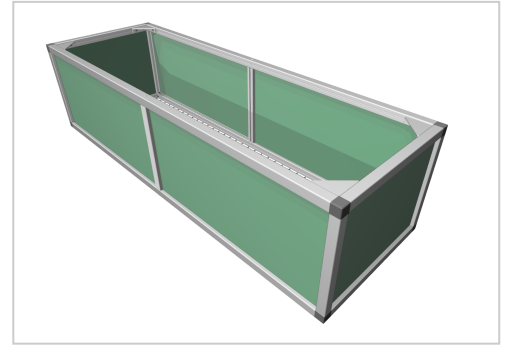


# Raised bed aluline 150 x 50 cm | green | 39 cm

**Product number** 1012485

**Weight** 40kg



## Product description

Our aluminium raised bed - convenient, clever, high quality and maintenance-free. modern and smart design meets your demands

- 25 years of experience
- no foil necessary on the inside
- 30 x 30 mm anodised aluminium profiles
- weatherproof HPL panels in professional quality
- simple assembly system, quickly installed
- perfect for the demanding garden
- ergonomic working posture
- 30 x 30 mm anodised aluminium profiles
- never paint again

## Product properties

**Wide** 50 cm

**Length** 150 cm

## More images

