

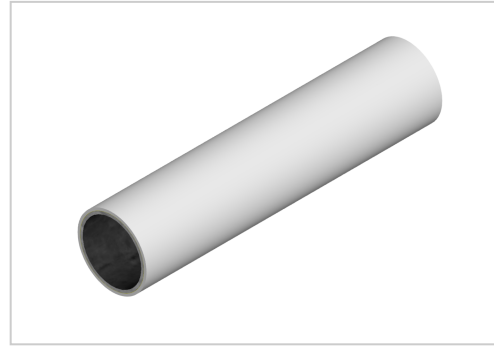
# M-Tube 1 mm grey | Cut length

D-Coat-Rohr 1 mm grau kaufen ? Jetzt sparen in unserem Onlineshop ?!

**Product number** PL-2071 SZ

**Weight** 0.697kg

**Length** 4000mm



## Product description

The M-tube with a wall thickness of 1 mm is used in conjunction with our connectors to build specific solutions such as workstations, transport trolleys, shelving systems.

Due to the 2 mm wall thickness, stability has a name.

With this stable wall you can solve even the most difficult problems in your production...

Our M-tubes are characterised by quality and stability.

The following features are due to the structure of the M-pipe.

Inner coating as corrosion protection.

Stable steel core.

Full-surface adhesive layer.

Full-surface synthetic resin layer.

This quality in the pipe structure leads to the positive properties such as

Heat resistance 100°C.

Cold resistance -20°C.

Highly resistant to oil and chemicals.

## Product properties

**Compatible with** Beewatec

**Series** S- LPS Lean Production

**Part type** Tubes D28 steel

**Colour** grey

**Profile length** Cut length

**Lean system type** D28 steel kit system

**Delivery unit** Cuts

## More images

