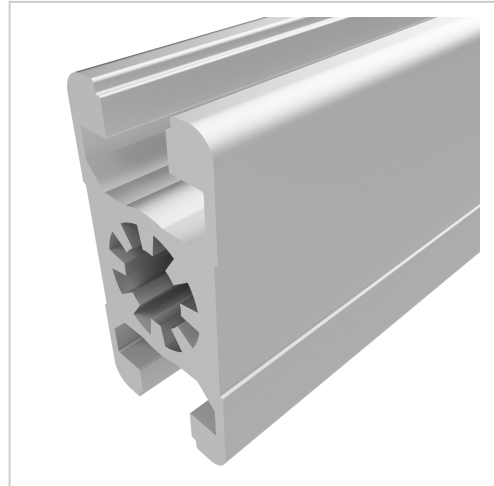


Profile 22,5x45 natural-10 | Cut length

Product number PB-1020 SZ

Weight 1.22kg



Product description

The profiles in pitch 45 with groove 10 are suitable for assemblies of all kinds. Due to the different profile geometries, the material requirements can be adapted to the application. The grooves are designed for M8 screws.

Cut to size max. 6000 mm

Compatible with Bosch 3 842 990 292

Product properties

Nutauszugskraft	F=7.000 N
Breite Profil	45 mm
Höhe Profil	22,5 mm
Groove shape	Open grooves, Clamp Profile
Series	Series 45-10
Profile length	Cut length
Delivery unit	Cuts
Contour	Rectangular
Colour	natural
Execution	heavy
Modular dimension	Modular dimension 45
Size	22,5x45 mm

More images

