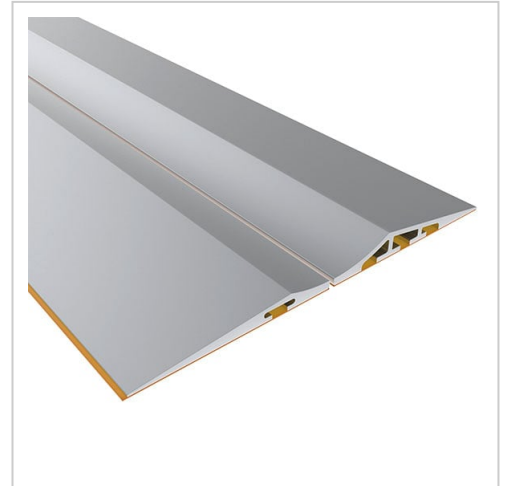


Parking rail flat-high | 2400 mm

Parkschiene flach-hoch 2400 mm-Set kaufen ? Jetzt sparen in unserem Onlineshop ?!

Product number LN-1024

Weight 3.5kg



Product description

Discover Our Flat-High Parking Rails Set – The Ideal Solution for Efficient and Flexible Warehouse Organization

This set allows you to **clearly define storage spaces**, optimizing workflows and improving warehouse efficiency.

Key Features:

- ? **Robust Construction:** Made from **high-quality materials**, ensuring **durability and stability** for daily use.
- ? **Easy Installation:** Thoughtfully designed for **quick and hassle-free** mounting, saving **time and effort**.
- ? **Flexibility:** With a length of **2400 mm**, these rails are **suitable for various applications** and can be customized as needed.
- ? **Complete Set:** Includes **all necessary components** for immediate implementation in your warehouse.

Competitive Advantage:

Compared to similar competitor products, our **flat-high parking rails** offer **equivalent quality at a more attractive price**. They are **structurally identical but more cost-effective**, helping you **maximize your budget**.

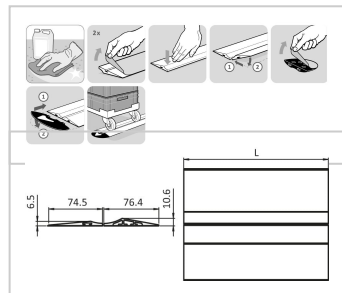
Optimize Your Warehouse Logistics

Upgrade your storage system with our **flat-high parking rails set** and benefit from a **cost-efficient solution** without compromising **quality or functionality**.

Product properties

Part type Parking rails

More images



LOW – HIGH:
For medium to heavy weights

FLACH – HOCH:
Für mittlere bis schwere Gewichte

