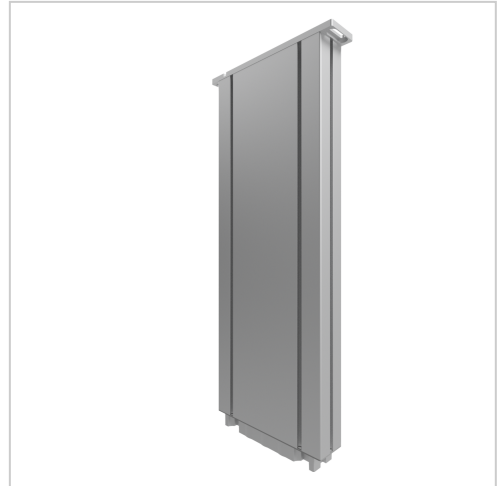


Telescopic lifting column EL500-3200-9

Teleskophubsäule EL500-3200-9 kaufen ? Jetzt sparen in unserem Onlineshop ?!

Product number 1013871

Weight 12.6kg



Product description

Discover the EL500-3200-9 Telescopic Lifting Column – The Ideal Solution for Precise and Reliable Height Adjustments

Whether in **industrial applications**, the **medical sector**, or **ergonomic workstations**, this lifting column offers **maximum flexibility and performance**.

Key Features:

- ? **High Load Capacity:** With an impressive lifting force of **up to 500 kg**, the EL500-3200-9 is perfect for **heavy loads and demanding applications**.
- ? **Precise Height Adjustment:** A **500 mm stroke range** enables **precise height adaptation**, promoting **ergonomic working conditions** and boosting **productivity**.
- ? **Robust Construction:** Made from **high-quality materials**, ensuring **durability and stability**, even with intensive use.
- ? **Easy Integration:** The **thoughtfully designed** structure allows for seamless **integration** into **existing systems and applications**.
- ? **Quiet Operation:** **Advanced drive technology** ensures **smooth and silent height adjustment**, enhancing **user comfort**.

Competitive Advantage:

Compared to similar competitor products, the **EL500-3200-9** offers **equal or even superior performance** at a **more attractive price**. With its **higher load capacity** and **extended stroke range**, it provides **greater flexibility and efficiency** in various applications.

Optimize Your Work Processes

Enhance efficiency with the **EL500-3200-9 telescopic lifting column** – a **cost-effective solution** that delivers **uncompromising quality and functionality**.

Product properties

Series	Workstation systems
Part type	Telescopic lifting columns
Connection cable	2000 mm pluggable with connector Molex Mini Fit jr.
Stroke	500 mm
Lifting speed	9 mm/s
Nominal force	3200 N
Installation dimension	680 mm

More images

