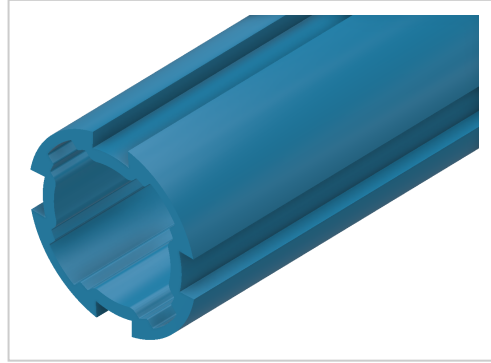


Profile Tube D30, natural | Cut length

Product number PL-1124 SZ

Weight 3.126kg



Product description

Round tube with aluminium clamping grooves

Product properties

Compatible with	item
Series	i- LPS Lean Production
Profile length	Cut length
Colour	blue
Delivery unit	Cuts
Lean system type	D30 Aluminium i kit system

More images

