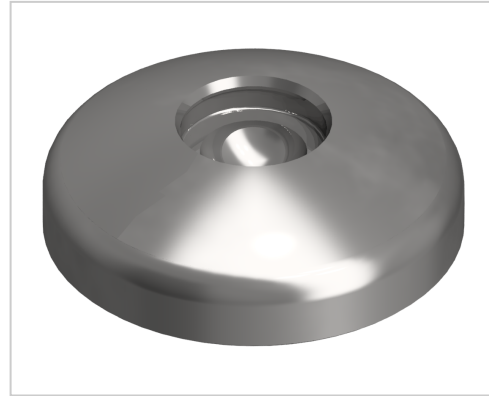


Base A D60, stainless

Product number ZB-3218

Weight 0.218kg



Product description

The combination of a threaded rod and a swivel foot plate gives a complete adjustable foot. Leveling feet serve as any type stepless height and level adjustment of modules and racks. The tilt of the plate is variable. Optionally, a rubber insert can be installed.

Product properties

| | |
|-------------------------------|--|
| Compatible with | Bosch |
| Part type | levelling feet |
| Series | Series 60-10, Series 45-10, Series 50-10, Series 40-10, Series 30 8, Series 20-6 |
| Type | A |
| Execution | stainless steel |
| Base for swivel feet Ø | 60 mm |

More images

