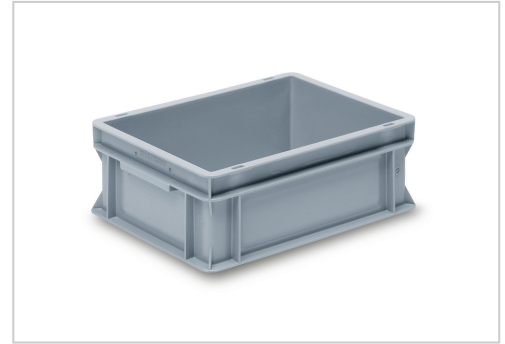


Euro container closed 400 x 300 x 145 mm, grey | 145 mm

Eurobehälter geschlossen 400 x 300 x 145 mm, grau kaufen ? Jetzt sparen in unserem Onlineshop ?!

Product number EG 43/14,5



Product description

Euro Container Closed 400 x 300 mm in Gray – Your Reliable Solution for Storage and Transport

Our **closed Euro container (400 x 300 mm) in discreet gray** is the **perfect choice** for **efficient storage and secure transport** of your products. Made from **durable polypropylene**, this container stands out for its **robustness and versatility**.

Product Features:

? Standardized Dimensions:

With a **base size of 400 x 300 mm**, this container complies with **Euro-standard dimensions**, ensuring **seamless integration** with **pallets and shelving systems**.

? Closed Design:

Fully **sealed sidewalls and bottom** protect the contents from **external influences** such as **dust and moisture**, while allowing **easy cleaning**.

? High Load Capacity:

Thanks to its **sturdy construction**, the container is **ideal for transporting and storing heavy goods**, ensuring **safe stacking**.

? Ergonomic Handling:

Equipped with **ergonomic handles** on the short sides, the container allows **comfortable and secure transport**.

? Temperature Resistance:

The Euro container is **resistant to heat and cold**, making it suitable for use in **various environments**.

Application Areas:

This **Euro container** is highly versatile and is used in a **wide range of industries**:

- **Industry & Manufacturing:** Ideal for storing **components and tools**.
- **Logistics & Shipping:** Perfect for the **safe transport of goods**.
- **Retail:** Suitable for **product display and storage** in sales areas and warehouses.
- **Food Industry:** **Food-grade material** allows **direct contact with unpackaged food**.

Why Choose Our Euro Container?

We offer an **excellent price-performance ratio** without compromising on **quality**. Our **Euro containers** are **available from stock** and can be ordered **starting from just one unit**.

Invest in our closed Euro container (400 x 300 mm) in gray and **optimize your storage and transport processes efficiently and sustainably**.

Product properties

Euro container closed 400 x 300

More images

