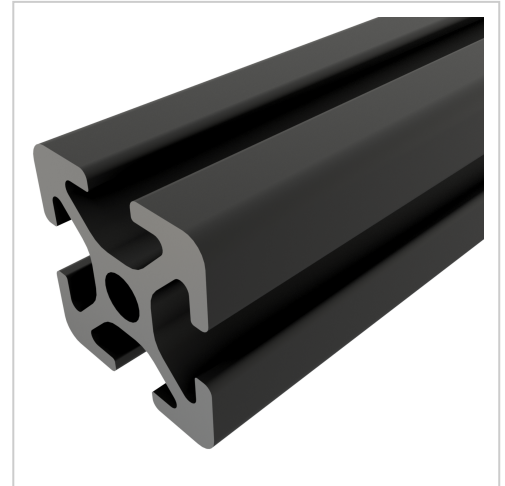


Profile 5 20x20, natural | Cut length

Profil 5 20x20, schwarz kaufen ☐ - 0.0.370.15 kompatibel mit Aluprofilen.
Jetzt sparen in unserem Onlineshop ☐ !

Product number PI-4030 BZ

Weight 0.486kg



Product description

The compact design of Profiles 5 makes them particularly suitable for small and weight-optimised assemblies. The grooves and core holes of Profiles 5 are designed for M5 screws

Cut to size max. 6000 mm

Product properties

| | |
|------------------------|-------------------------------------|
| Material | Al Mg Si 0.5 F25, artificially aged |
| Tolerances | EN 12020-2 |
| Anodised | E6EV6 10-15 µm black |
| Nutauszugskraft | F=500 N |
| Breite Profil | 20 mm |
| Höhe Profil | 20 mm |
| Groove shape | Open grooves |
| Colour | black |
| Profile length | Cut length |
| Delivery unit | Cuts |
| Series | Series 5 |
| Size | 20x20 mm |
| Execution | heavy |

More images

